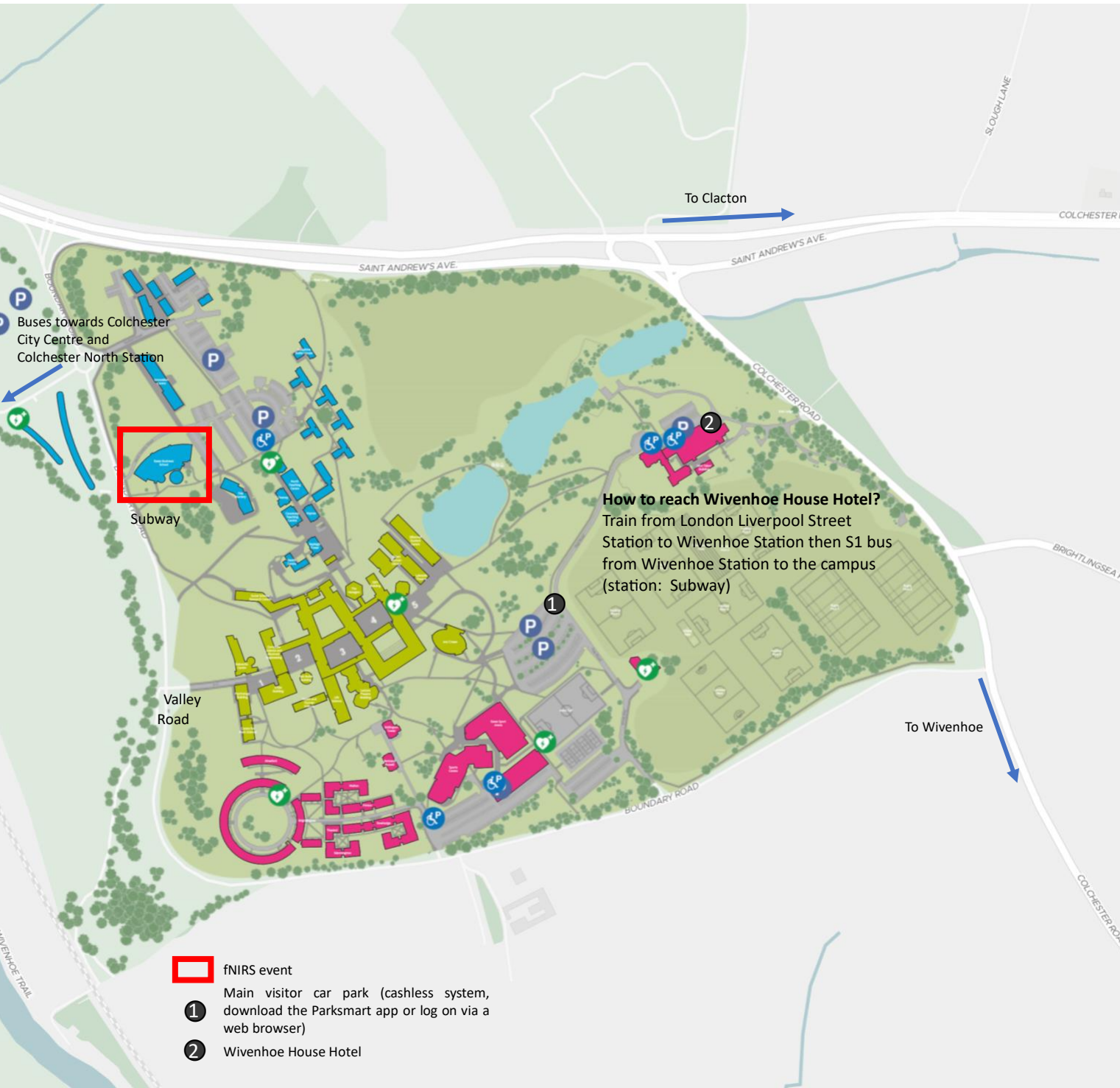


Getting to the symposium:



By train: 3 options

- Train from London Liverpool Street Station to Wivenhoe Station. Then take S1 bus up to Subway station. Or take a taxi.
- Train from London Liverpool Street to Colchester North Station (< 1hour). From Colchester North Station, reach The Albert bus station and take 87 bus heading to Brightlingsea and stop at Subway Station or take S1 bus, heading to Wivenhoe and stop at Subway Station or grab a cab.
- Train from London Liverpool Street (1 hour) to Hythe station and then ± 20 min walk to campus.

By plane:

From London Gatwick Airport: train to London Liverpool Street Station and then another one to Colchester North Station.

From London Heathrow Airport:

- National Express to Colchester City Centre
- Or train to London Liverpool Street Station and then another train to Colchester North Station.

From London Luton Airport:

- National Express to Colchester City Centre
- Or train to London Liverpool Street Station and then another train to Colchester North Station.

From London Stansted Airport:

- National Express
- or First Bus X20 to Colchester City Centre.

Once in Colchester, take a bus or taxi to the campus.

By bus:

National Express: London or UK airports <--> Colchester.

Once in Colchester, take buses 74 / 87 (First Bus) / S1 (First Bus) bus to NW-bound Bus Stop. 1min away from Essex Business School Colchester

By taxi:

Colchester Train Station <--> Essex Business School (± 20 min). Taxi numbers on page 3.

Further information: <https://www.essex.ac.uk/visit-us/plan-your-visit/travel-to-colchester>

Colchester North Station to City Centre:



From Colchester North Station to Colchester City Centre:

- Bus 8 / 87 / S1 from Groves Close (5min by foot from the train station) until Middleborough (possible to continue with Bus 87 until Essex Business School).

From Colchester City Centre to Essex Business School:

- Bus 74 heading to Clacton. From High Street (Stop Fc) until Subway Station.
- Bus 87 heading to Brightlingsea. From Middleborough until Subway Station.

From Colchester Town Station to Colchester City Centre: via Long Wyre and St Botolph's Street (± min by foot)

From Colchester Town Station to Essex Business School:

- Bus 74 heading to Clacton. From Town Railway Station (Stop B) until Subway Station.
- Bus 87 heading to Brightlingsea. From The Surgery (8min away by foot from Colchester Town Station) until Subway Station.
- Bus S1 heading to Wivenhoe. From Military Road (Stop D) until Subway Station.

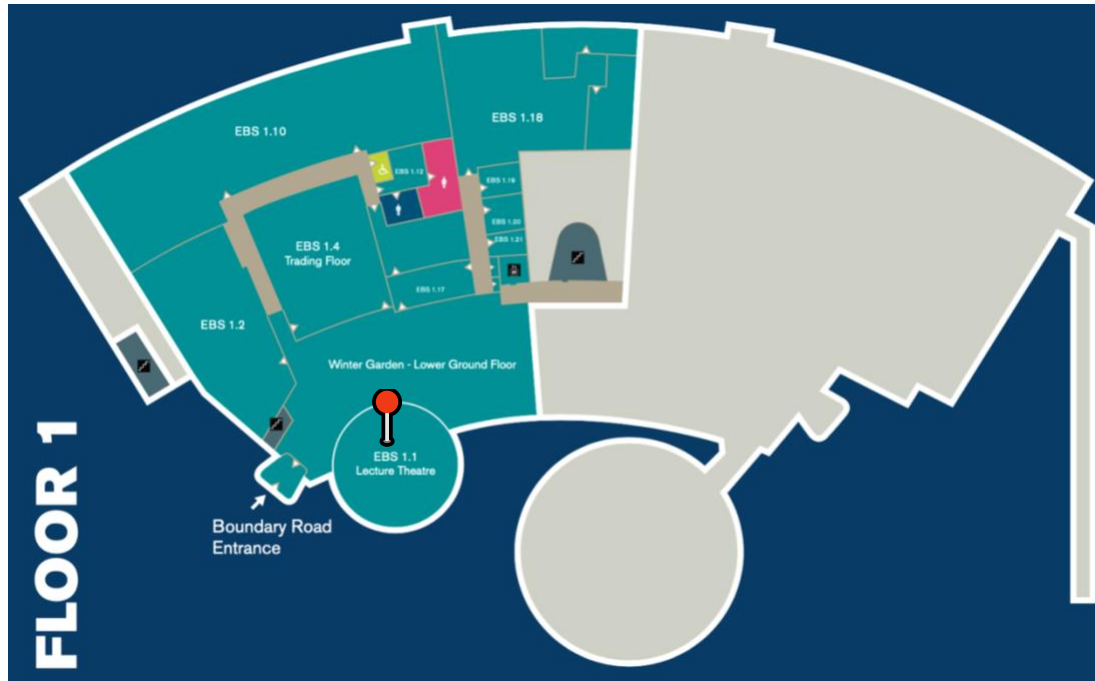
Looking for accommodation?

- University of Essex – Colchester Campus: 4 rooms available as of 07.09
8min away from Essex Business School by foot
- The Railway Sleeper Lodge: 6 rooms available as of 07.09
40min away from Essex Business School by bus
- St Nicholas Hotel -Surya Hotels: 10+ rooms available as of 07.09
20 – 30min away from Essex Business School by bus
- Brook Red Lion Hotel
20min away from Essex Business School by bus
- The George Hotel: 10+ rooms available as of 07.09
20 – 30min away from Essex Business School by bus
- Baye House: 4 rooms available as of 07.09
20 – 30 min away from Essex Business School by bus
- Cuckoo Rooms: 1 room available as of 07.09
30min away from Essex Business School by bus
- Colchester Boutique Hotel – breakfast included –: 10+ rooms available as of 07.09
30min away from Essex Business School by bus
- Best Western The Rose & Crown Hotel: 10+ rooms available as of 07.09
13min away from Essex Business School by bus
- Star Anglia Hotel: 10+ rooms available as of 07.09
35min away from Essex Business School by bus
- The North Hill Hotel: 2 rooms available as of 07.09
35min away from Essex Business School by bus
- Aspire 860: 1 room available as of 07.09
25 min away from Essex Business School by bus
- GreyFriars: 5 rooms available as of 07.09
20min away from Essex Business School by bus
- Wivenhoe House Hotel: 5 rooms available as of 07.09
12 min away from Essex Business School by foot

Taxi companies:

- Panther Cabs:
01206 525 525
- Minicab Services Colchester:
01206 544 444
- Lucky 6 Taxis:
01206 666 666
- Colchester Taxis Essex:
01206 585 585
- Five Sevens Taxi:
01206 577 777
- N1CarsTaxi:
07898 247 781
- Mac Cab Airport Taxi:
07746 785 735
- All The Fours:
01206 544 444
- Cab2Go – Colchester:
01206 701 701
- Five Eights:
01206 588 888

On the days of the conference:



📍 Day 1 - Workshops:

- Room 1.1:
Biopac (13:00 – 15:00)
Cortivision (15:30 – 17:30)
- Room 2.1:
David Mehler (13:00 – 15:00)
Gowerlabs (15:30 – 17:30)
- Room 2.65:
Artinis (13:00 – 15:00)
NIRx (15:30 – 17:30)
- Room 2.66:
Nottingham (13:00 – 15:00)
Nottingham (15:30 – 17:30)
- Room 2.34:
Antonia Hamilton (15:30 – 17:30)

📄 Day 2 - Talks happening in the Auditorium room 2.2:

- Session 1, Cognitive Neuroscience
- Session 2, Developmental Neuroscience
- Session 3, Data Analysis
- Session 4, Optical Imaging-Hardware

📄 Posters displayed in rooms 2.45, 2.46 and 2.68

📄 Registration desk

